

Detection and quantification of heavy metals and toxins in rice bran related products:

Use of spent bleaching earth as fertilizer

Dr Md Anwarul Haque

Dr Nilufa Ferdous

Dr Habibul Bari Shozib



Edited by M A Kashem



Grain Quality and Nutrition Division
Bangladesh Rice Research Institute (BRRI)

Detection and quantification of heavy metals and toxins in rice bran related products: Use of spent bleaching earth as fertilizer

Authors

Dr Md Anwarul Haque¹

Dr Nilufa Ferdous²

Dr Habibul Bari Shozib^{3*}

¹Principal Investigator and Principal Scientific Officer, Grain Quality and Nutrition Division, BRRI, Gazipur 1701, Bangladesh.

²Co-Principal Investigator and Senior Scientific Officer, Grain Quality and Nutrition Division, BRRI, Gazipur 1701, Bangladesh.

³Co-Principal Investigator and Senior Scientific Officer, Grain Quality and Nutrition Division, BRRI, Gazipur 1701, Bangladesh.

**Corresponding author's E-mail*

shozib11@gmail.com, habibul.gqn@brri.gov.bd

Advisors

Dr Md Shahjahan Kabir, Director General, BRRI

Dr Md Ansar Ali, Director (Administration and Common Service), BRRI

Dr Tamal Lata Aditya, Director (Research), BRRI

In collaboration with

Dr Muhammad Ali Siddiquee, Chief Scientific Officer and Head, Grain Quality and Nutrition Division, BRRI

Dr A T M Sakhawat Hossain, Principal Scientific Officer, Soil Science Division, BRRI

Dr Shamima Akter, Senior Scientific Officer, Plant Pathology Division, BRRI

Edited by

M A Kashem, Technical Editor and Head, Publications and Public Relations Division, BRRI



**Grain Quality and Nutrition Division
Bangladesh Rice Research Institute (BRRI)**

BRRI publication no: 278

Number of copies: 1000

1st Edition June 2019

Published by: Bangladesh Rice Research Institute (BRRI), Gazipur 1701, Bangladesh.

Copy right: Bangladesh Rice Research Institute (BRRI), Gazipur 1701, Bangladesh.

Funded by: Special research grant of “Agriculture Research Program 3257103” for financial year 2018-19 under the Ministry of Agriculture (Part- 1430101-120006504) titled as “Detection and quantification of heavy metals and toxins in rice bran, bran oil and deoiled rice bran”.

Citation: Md Anwarul Haque, Nilufa Ferdous and Habibul Bari Shozib. 2019. Detection and quantification of heavy metals and toxins in rice bran related products: Use of spent bleaching earth as fertilizer. Publication number 278 (1st edition), Bangladesh Rice Research Institute (BRRI), Gazipur 1701, Bangladesh.

Printed by

Modina Printing Press (Md Anamul Haque)

Joydebpur bazar, Gazipur 1700

Mobile: 01819 158 159

Md Shakil Khan

Designer

E-mail : bdfashiondesign1@gmail.com





Director General

Bangladesh Rice Research Institute

Preface

Bangladesh is the fourth largest rice producing country in the world and the annual production of rough rice is sufficient to fulfill the demand of this country. Rice bran consists of 8-10% of rough rice and 20-25% rice bran oil comes out of it. Rice bran oil, if properly processed, may cover almost 50% national demand of edible oil. If done so, huge amount of foreign currency may be saved. Deoiled rice bran is used as cattle, fish and poultry feed, silica gel and insulation for brick industries in our country. From the nutritional point of view, rice bran oil has been getting popularity as nutritious cooking oil and there has also been increasing awareness and concern among consumers regarding heavy metal contamination in rice and its effect on rice byproducts. Intake of toxic metal contaminated rice bran oil may pose a risk to human health and deoiled rice bran for fish and animal health and enter into the food chain. It is true that rice plant uptakes heavy metal at a higher rate than most other cereal crops. As a result, maximum heavy metal content may accumulate in bran layer. Toxic heavy metals such as arsenic, cadmium, lead, chromium and mercury are ubiquitous and potentially hazardous contaminants.

On the other hand, mycotoxins such as aflatoxin are produced by microbes generally associated with fungi. The presence of aflatoxin in cattle feed should be a matter of concern, as aflatoxin B1 in the feed of milch cows is known to come out as aflatoxin M1 in milk, which is consumed by children, the most vulnerable group. During post-harvest processing stages, proliferation of aflatoxin can be exacerbated in susceptible environment. Now-a-days, aflatoxin has been one of the major concerns regarding contamination of food products including rice bran, rice bran oil and deoiled rice bran.

Grain Quality and Nutrition Division of BRRI has been working on the nutritional quality of rice for long time. This is the high time to be aware about the consumption of nutritionally safe food. To ensure the food security, food should be available and nutritionally safe for consumption. Heavy metals and toxins are causes of health hazards. The findings of the research group will contribute to the rice bran oil consumers and improve their health condition. In the age of continuous connection, I expect well circulation of the publication to the target audience on line as well as off line. I would like to thank the scientists and editor of this booklet for their professional activities.

(Dr Md Shahjahan Kabir)

Detection and quantification of heavy metals and toxins in rice bran related products: Use of spent bleaching earth as fertilizer

ABSTRACT

This study was aimed to investigate heavy metals and toxins effect on rice bran related industrial products such as rice bran (RB), rice bran oil (RBO) and deoiled rice bran (DORB). Heavy metals such as As, Pb, Cd, Cr, Ni, bacteriological assay such as bacterial load (cfu/g), fungal assay such as yeast and molds load (cfu/g) and fungal toxins specially aflatoxins (B1, B2, G1 and G2) were investigated for RB, RBO and DORB samples. RB and DORB samples were found positive for bacteria, yeast and mold population, and aflatoxin B1 for fresh (0), 7, 14 and 21 days after storage at ambient temperature. RB and DORB samples for 28 days after storage found lower load in bacteria, yeast and mold load but completely negative for aflatoxin B1. We have examined all the above mentioned quality parameters for RBO and found negative for bacteria, yeast and mold load and even aflatoxin B1. In addition, no trace heavy metals was present in either crude or refined RBO samples. Since acute toxicity experiment on animal health, toxins and heavy metal toxicity in RBO samples found negative, so refined RBO is safe and will bring benefit to health for Bangladeshi population. In addition, we also have examined the feasibility and potential aspect of using spent bleaching earth (SBE) as an organic fertilizer in rice cultivation. We have observed that 25% replacement of BRRI recommended fertilizer dose with SBE does not compromise yield component at all. This replacement percentage of BRRI recommended dose can further be extended up to 50% at best in extended multilocation field trials in Bangladesh. Since SBE is very cheap (only Tk 1-2 per kg SBE) and available in refined edible oil mills in Bangladesh, so it could possibly save significant amount of currency in return and lower agricultural cost indeed.

INTRODUCTION

Referring to our previous study on post-harvest loss minimization of rice bran for quality bran oil (Haque and Shozib, 2018), we concluded that heat treatment at 130-135°C for two hours, found suitable for stabilizing rice bran from increasing FFA% and lowering oil% for at least 28 days and it is expected that lipase activity might possibly inhibited or at least slow down their activity by heat treatment. We recommended adopting heat treatment as physical treatment, soon after harvesting bran from kernel in this regards. This particular physical treatment should be applied in auto rice mill promises soon after harvesting fresh bran. RBO industries are facing challenges with lack of fresh bran, high FFA% containing bran with lower percentage of oil content, artificial crisis of bran even at harvesting season. So we assumed that our findings could assist these RBO industries to stabilize rice bran with attainable quality up to 28 days after harvesting bran at parboiled milling condition. We have noticed regarding RBO industrial waste such as spent bleaching earth (SBE) which might have potential to use as alternate fueling as well as fertilizer in Bangladesh. Considering the above mentioned research findings we wanted to examine quality parameters of rice bran (RB), rice bran oil (RBO) and deoiled rice bran (DORB) in terms of heavy metal and toxins. In addition, we also demonstrated field experiment data on the

effect of SBE as an organic fertilizer on BRR1 dhan81 in Boro season for feasibility study.

RBO has an increasing trend of consumption in local market along with RB and DORB, which has a huge market in cattle, fish and poultry related feed industries. In addition, SBE has a little exposure in insulation brick industries in our country. Value chains have developed in association with the growth of the formulated feed industry and now widely connect feed suppliers with farmers, though more remote farmers still lack access to formulated feed. Bangladesh produces 50-55% of fish feed ingredients, with the remainder imported. These products flow from producers or importers via feed processors to reach farmers through various channels. Raw materials such as rice bran require processing in mills before incorporation into formulated aquaculture feeds. The main ingredients used for fish feed production are rice bran (20-50% inclusion), maize (5-20% inclusion), soybean meal (10-30% inclusion), mustard oil cake (10-25% inclusion), fish meal (5-15% inclusion) and meat and bone meal (10-20% inclusion). Rice bran is mainly produced locally and is derived from rice milling. It accounts for 8-10% of rough rice grain by weight. Three types of rice bran are used: deoiled rice bran (DORB), grade A rice bran (comprising of 85-90% bran and 15-10% husk) and grade B rice bran (comprising of 50-60% bran and 40-50% husk). The protein content of DORB and grade A rice bran is approximately 12-17% and 10-13% respectively. Only 30% of total rice bran production in Bangladesh is used for commercial animal feed products. Three main factories produce approximately 0.13 million tons of DORB per year during production of rice bran oil (Mamun-Ur-Rashid et al., 2013).

Rice bran (RB) is a byproduct of rice milling industry which converts into DORB when its oil content extracted in oil industry. Its composition varies according to the type of milling but it contains 15-25% oil, 11-17% protein, 6-14% fibre, 10-15% moisture and 8-17% ash (Sharif et al., 2014; Haque and Shozib, 2018). It is an abundant source of antioxidant compounds such as tocopherols, γ -oryzanol and other phenolics (Aguilar-Garcia et al., 2007), which helps in health benefits including lowering blood cholesterol, decreasing platelet aggregation and anti-inflammation (Lai et al., 2009). It is a good source of lysine and methionine (Dale, 1997). As such RB is considered a suitable feed ingredient for livestock and fish. During oil extraction chemical and heat treatments applied to RB. It seems reasonable to conclude that, those treatments may change the quality of the nutrients presence in the bran that need further investigations. On the other hand, some nutrient profile would proportionately be higher in the DORB than RB due to oil extraction from RB (Houston, 1972; Warren and Farrell, 1990). Other benefits include less susceptibility of DORB to the rancidity. Some researchers found that the nutritional value of DORB is equal to the value of RB in broiler diets when diets are adjusted for metabolizable energy by adding oil (Farrell, 1994). Islam et al., (2018) conducted a study on the performance of broiler feed on iso-caloric and iso-nitrogenous diets containing either RB or DORB and assessed the economics of broiler diet.

Rice, rice polish and deoiled rice bran along with maize, starch, wheat, wheat bran, wheat grain (milled to flour), molasses, cassava meal etc. are used as energy source of fish feed in Bangladesh (Table 1).

Table 1. Identification of feed ingredient (Rice related only source BFRI online report).

Identification of feed ingredient		Nutrient content (%)			Gross energy, GE* kJ.g ⁻¹
Name of ingredient (Plant source)	Physical property	Crude protein (%)	Crude fat (%)	Carbohydrate NFE (%)	
Rice bran (Traditional milling)	Powder	7-10	10-12	56	15-16
Rice bran (Auto, boiled)	Powder	10-12	10-15	45	13-16
Rice bran (Auto, <i>atob</i>)	Powder	10-14	10-18	45	13-17

Around 100 commercial feed mills are currently in operation in Bangladesh. About 600 of small-scale noncommercial and on-farm feed manufactures produced feed for their own consumption. About 6-8 large feed mills account for 60-70% of market share. In case of fish feed, most of the mills produce *pangas*, *koi*, *shing*, *magur* and *tilapia* feeds. Only few feed mills produce feed for shrimp and carps. There are several types of fish feeds such as nursery (Mesh/Fine Crumbles), Starter-1 (Crumbles), Starter-2 (Crumbles), Starter-3 (1.8-2.5 mm diameter), Grower (2.0-4.0 mm), Finisher (2.0-4.0 mm). Distributions of feed production are as nursery 5%, starter 25% and grower 70%. Species wise feed productions are *pangas* 60%, *tilapia* 28%, *koi* and *shing* 8%, carp 2% and shrimp 2% (Zulfikar, BFRI). In feed mills specially fish feed mills a wide range of 5-30% RB and DORB are being used as active plant feed ingredient. DORB is used as high protein source (>18%) and RB is used for high fat source (>20%).

The lipid fraction of rice bran contains mainly oleic, linoleic and palmetic acids which are excellent nutrient source. Rice bran oil contains the lowest hypho cholestrolaemic activity (Rukmini, 1985). Deoiled bran contains less fat and high protein that is used in the cattle. Almost all commercial feed mills also produce poultry feeds. In 2009, Jayaraman and Kalyanasundaram reported the toxigenic fungi presence in the rice bran oil and deoiled bran samples which were classified as *Aspergillus glaucus*, *A. flavus*, *A. niger*, *A. nidulans*, *A. candidus*, *A. fumigatus*, *Penicillium spp.* and *Gliocladium viride*. Since rice bran has now achieved considerable importance as a source of oil, which besides being edible, also has several industrial applications. Besides, rice bran has always been an inexpensive and easily available source of nutritious cattle feed for the farmer. A preliminary survey on some samples of unparboiled rice bran and parboiled rice bran in 1990, Jayaraman and Kalyanasundaram reported that 35% of the samples contained aflatoxin B1 (AFB). When oil was extracted from contaminated bran, a considerable amount of the toxin came out in the crude oil but the refined oil was free from toxins. The residual bran after oil extraction which generally goes into processed cattle feed however, still contained a considerable amount of aflatoxins (Jayaraman and Kalyanasundaram, 1996). Aflatoxin B1 is one of the most hepatocarcinogenic naturally occurring compounds which is produced by toxic species of fungi in different types of food including rice. The contamination of food with this toxin could lead to a series of health hazards and huge economic losses.

Rice is the second largest quantity staple food and internationally traded cereal. Aflatoxin is produced in areas where climatic conditions are favorable to fungal growth. The production of aflatoxin affects plant growth and rice yield.

Elangovan et al., (1999) surveyed on the prevalence of aflatoxin B1 (AFB) in rice bran and collected 142 samples from 55 rice mills in coastal and interior districts of Tamil Nadu, Andhra Pradesh and Karnataka. It was reported that 62% of the samples contained AFB and the levels far exceeded the permissible limit of 50 ppb. Among them 60% of the positive samples having 50-500 ppb and 30% up to 2000 ppb. The mycoflora of bran included over 20 osmophilic species, of which *Aspergillus flavus* link showed the highest frequency (75%) as well as abundance (37.6%). The high frequency and high levels of AFB showed no correlation with moisture content of the samples, climatic variations, or with the unparboiled or parboiled status of the rough rice but with the maintenance of sanitation in the rice mills, which were, therefore, suspected to be a major source of contamination of bran with aflatoxigenic fungi.

Heavy metal pollution of soil affects the nature of the environment leading to serious consequences. Heavy metals group includes Ag, Ba, Cd, Co, Cr, Mn, Hg, Mo, Ni, Pb, Cu, Sn and Zn and some metalloids such as As, Sb, Bi and Se. Arsenic, for example, is often considered as a heavy metal due to the similarity of its chemical properties and behavior with the other heavy metals. Heavy metals accumulation in soil and in the environment in general, may be related to the phenomenon of bioaccumulation ability of living organisms that is heavy metal may be increased in human organism due to industrial activities and the food chain. The main sources of heavy metal pollution in soil are irrigation, especially with sewage; solid-waste disposal, for example, sludge and compost refuse; the use of pesticides and fertilizers; and atmospheric deposition (Fabjola et al., 2015).

Plants acquire the necessary nutrients, such as N, P and K from the soil. However, they may also accumulate unnecessary and toxic metals, such as Pb and Cd. Several plants have the ability to accumulate high metal concentrations (Watanabe, 1997). Many studies have reported data for the transfer of heavy metals from soil to plants and vegetables through roots and shoot (Uchida et al., 2009). Therefore, toxic metals such as As, Cd and Pb can be taken up from cereal crops and transferred to their grains (Hu et al., 2014). Toxic metals may be classified according to their capability of being transferred from soil to plants in mobile metals, such as Cd and slow moving metals, such as Pb. This property may affect their bioaccumulation in plants (Sekara et al., 2005).

On the other hand, activated bleaching earth is white filter clay, which is known as activated clay. It has strong decoloring ability. So, bleaching earth is used in refining process for degumming and bleaching in industry of rice bran oil extracted from rice bran as well as all edible vegetable oils extracted from plant sources. Spent bleaching earth (SBE) is an ash color waste product of activated bleaching earth which is generated after using edible oil in industry. As a result, generated huge amount of SBE is deposited as garbage and some of this SBE is being used in brick field as fuel in Bangladesh. Cheong et al., 2013 reported a novel approach of using SBE in agriculture

as an alternative method for improved biogas production efficiency. SBE is being sold out at Tk 1 to 2 per kg at RBO mill gate at present in Bangladesh.

Scientists of Grain Quality and Nutrition Division in collaboration with soil scientist, BRRI, Gazipur, Bangladesh have conducted a field experiment on BRRI dhan81 in Boro season 2018-2019 using different percent of SBE with BRRI recommended dose as potential source of organic fertilizer. We aimed to figure out the optimum percentage of SBE replaced by BRRI recommended dose.

So finally, in this study, we focused our research activities on the detection of heavy metals and toxins specially aflatoxins. We also have aimed to conduct a field trial on the potential usage of SBE as an approach of feasibility study as an organic fertilizer.

MATERIALS AND METHODS

Heavy metal detection. After drying to a constant weight, RB and DORB samples were grounded into powder. Approximately 0.25 g of samples (RB and DORB) weighed and added into the polytetrafluoroethylene digestion vessel with seven mL of concentrated HNO_3 and one mL of hydrogen peroxide (H_2O_2). Subsequently, the samples were digested using two-step temperature program. During the first step, the temperature was linearly increased to 190°C over 10 minutes; the maximum power of the rotating magnetron was 1000W. During the second step, the temperature was maintained at 190°C for 30 minutes. After digestion and cooling, each solution was evaporated to ~ 2 mL and diluted with deionized water and filtered through Whatman No. 1. The filtrate was used for the determination of Pb, Cd, Cr and Ni by Atomic absorption spectroscopy with the graphite furnace for the GFAAS analysis (AA6800). The results were reported as the average of three repeated measurement and all digestions were conducted in triplicate. All the solutions were made from analytical reagent grade chemicals and distilled and millipore filtered water with resistance of $18.2 \text{ M}\Omega\text{cm}$.

A total of five mL of the reducing agent, 3% (NaBH_4) solution (with 1% m/v NaOH), were added to one g aliquot sample in a conical flask and left for about 10 s. The arsine vapor was generated then directed to the heated quartz T-tube cell connected to the AAS. Calibration was carried out using aqueous standard solutions of As(III) in the concentration range of $1.0 \times 10^{-4} - 4.0 \mu\text{g L}^{-1}$. All measurements were carried out using an Analyst 100 atomic absorption spectrophotometer (Perkin Elmer) equipped with a deuterium for background correction with an arsenic cathode lamp at the wavelength of 193.5 nm. Quartz T-tube cell with a path length of 166 mm and diameter of 12 mm was heated to about 900°C in an air-acetylene flame with gas flow rates of 6.0 L min^{-1} (air) and 1.8 L min^{-1} (acetylene). The reaction conditions were optimized using three of the certified reference result.

Isolation of microbes from RB and DORB. Two types of samples such as rice bran (RB) and deoiled rice bran (DORB) of BRRI dhan28 were used to isolate microbes. Both types of bran were stored for 28 days at normal condition. Every seven days of intervals (1st sample was used at same days of oil extraction before storage) one g of each sample was added to nine mL of sterilized water in 150 mL Erlenmeyer flask and was

shaked for two minutes. After settled down five folds (10^{-1} to 10^{-5}) serial dilutions of the supernatant were made in test tubes. Small aliquots (50 μ L) from the 10^{-1} and 10^{-5} dilutions were pipetted and lawned onto nutrient agar (NA, Oxoid)) medium in petri dish (9 cm) with the help of angled glass rods. The plates were incubated in growth chamber at $28\pm 2^{\circ}\text{C}$ for 24hrs for colony formation. Colonies of bacteria formed on the plates were enumerated and expressed as cfu/g. Single bacterial colonies were selected based on morphologically different from each other. Selected bacteria were sub-cultured onto NA medium. The plates were incubated for three days. The pure culture was maintained in NA slants in a refrigerator at 4°C for further use.

Determination of aflatoxins (B1, B2, G1 and G2) in RB, RBO and DORB.

Agilent 1260 Infinity system, consisting of solvent rack, quaternary pump (with built-in degasser), standard autosampler, column compartment and fluorescence detector was used for separation and quantification. R-Biopharm electrochemical derivatization kit, including KOBRA® cell, variable control current source, 0.5 mm i.d. peek tubing (at least 34 cm long) and so on, was employed for derivatization. HPLC conditions are Column: Zorbax Eclipse Plus C18, (4.6 x 150 mm x 5 μ m, Column Temp.: 40°C Mobile Phase A: 1L water containing 238 mg KBr and 700 μ L 4M HNO_3 , Mobile phase B: MeOH, Isocratic: A : B = 50 : 50, 12 min., Flow rate: 1.0 mL/min, Detection: Ex: 362 nm, Em: 455 nm. Weigh 25g (mL) of sample and 2 g of sodium chloride into high speed blender jar. Add 125 mL of HPLC grade methanol:distilled water (60:40, v:v) into the jar, cover and blend for one minute at high speed. Dilute the extract with 125 mL of distilled water. Mix well by swirling followed by filtering approximately 40-50 mL of sample extract through Whatman No. 4 filter paper immediately. Transfer 10 mL of the filter (equivalent to 1 g of sample) into the glass syring barrel for passage through the prepared immune affinity column at a flow rate of 2-3 mL/min. Then add 10 mL of distilled water to the glass syring for washing the column. Expel the residual water from the column and transfer accurate 1 mL of HPLC grade methanol to elute aflatoxins from the column. It could be back-flushed with the methanol solution for completely release of aflatoxins from the monoclonal antibody if necessary. Collect all of the methanol elution and dilute with 1 mL of distilled water before injection into HPLC system.

Functional group analysis. Functional group analysis of SBE were done by FTIR Spectroscopy method.

Toxicity analysis. Experimental rat model was used for toxicity analysis of RB, RBO and DORB samples. Increment of body weight, mortality, activity and diarrhea occurrence were measured for toxicity analysis.

Field experiment. Field experiment was conducted with six treatments of BRRI dhan81 in Boro season 2018-19 at BRRI farm, Gazipur. Every plot size was (5X2) 10m^2 . Here, T_1 was control (no fertilizer), T_2 was 100% BRRI recommended dose (Fertilizers @ 160: 20: 30: 10: 2 kg N: P: K: S: Zn), T_3 was 100% spent bleaching earth with no BRRI recommended dose, T_4 was 75% spent bleaching earth with 25% BRRI recommended dose, T_5 was 50% spent bleaching earth with 50% BRRI recommended dose and T_6 was 25% spent bleaching earth with 75% BRRI recommended

dose. Yield contributing characters were analyzed by BRRI recommended technique. Milling, physical, chemical and cooking properties were analyzed using Grain Quality and Nutrition laboratory technique. Statistical analysis was done by Statistix10 and IBM SPSS Statistics 23.

RESULTS AND DISCUSSION

Study on heavy metals and toxins in rice bran related industrial products. A total of 33 commercial mills including nine auto rice mills, 12 RBO and 12 feed industries were visited to get rice bran related information from industries. In this regard, RBO mills including KBC Agro Products Private Limited (Savar, Dhaka), Ali Natural Oil Mills and Agro Industries Limited (Sonotia Bazar, Jamalpur), AM Bran Oil Company Ltd (Ghatail, Tangail), Rashid Oil Mills Limited (Ishwardi, Pabna), Majumder groups of industries (Chanka, Sherpur, Bogura), Jamuna Agro products Ltd (Godagari, Rajshahi) and Tamim Agro Industries Ltd (Bogura) etc; feed mills including Krishibid Feed Limited (Bhaluka, Mymensingh), Saudi Bangla Fish Feed Ltd (Bhaluka, Mymensingh), Provita Feed Ltd (Bhaluka, Mymensingh), Nourish Poultry and Hatchery Ltd. (Bhaluka, Mymensingh), Chhuya Agro Products Ltd. (Kapasia, Gazipur) and Aristocrat Agro Ltd (Bogura) etc as well as and auto rice mills including Haji Auto Rice Mill (Shombugong, Mymensingh), Yamin Auto Rice Mill (Shombugong, Mymensingh), Ma Auto Rice Mill (Kashigong, Mymensingh), Akashi Auto Rice Mill (Shombugong, Mymensingh), Krishani Auto Rice Mill (Dhamrai, Dhaka) and Mordern Auto Rice Mill (Sherpur) etc were visited. We have analyzed RB, RBO and DORB samples for heavy metal detection such as As, Cd, Pb, Cr and Ni and found negative results for these repeated samples (three replications). According to BCSIR, the detection limit of As, Cd, Pb, Cr and Ni are 5.0 ppb, 0.05 ppm, 0.5 ppm, 0.2 ppm and 0.5 ppm respectively. In both crude and refined RBO samples were free from bacterial and fungal growth specially aflatoxin B1 (Table 2). We also analyzed RB and DORB samples from freshly harvested (0) to 28 days of storage samples at ambient temperature with a period of seven days interval. We took only freshly extracted and purified samples regarding crude and refined RBO samples. The detection limit of heavy metals such as As, Cd, Pb, Cr and Ni in crude and refined RBO was similar with RB and DORB (Table 2). Irrespective of storage duration bacterial colonies were found ranging from 1×10^4 to 2.75×10^4 cfu/g and 1.16×10^4 to 5.9×10^4 cfu/g in RB and DORB respectively. In case of RB, the highest number of colony (2.75×10^4 cfu/g) was found at 7 days of storage followed by 14 days (1.85×10^4 cfu/g) and 21 days (1.68×10^4 cfu/g). The lowest number of colony (1×10^4 cfu/g) was recorded at 0 day of storage. In case of DORB, the highest number of colony (5.9×10^4 cfu/g) was recorded at 14 days of storage which was followed by 21 days (1.72×10^4 cfu/g), 0 day (1.16×10^4 cfu/g) and 28 days (0.93×10^4 cfu/g) (Table 3). The lowest number was at 28 days (0.93×10^4 cfu/g). In both types of rice bran like RB and DORB, yeast and molds (cfu/g) were positive for all samples and those ranges from 50 to 12500 cfu/g and 36 to 14700 cfu/g for RB and DORB respectively (Table 3). These RB and DORB samples were also tested for toxicity test on experimental rat model and found negative in toxicity but toxins such as aflatoxin B1 was found positive for all RB and DORB samples ranges from 9.79 to 40.21 ppb and 9.43 to 57.74 ppb respectively except 28 days of storage samples (Below detectable limit). RB samples of 14 and 21 days of

storage had showed higher load of aflatoxin B1 of 40.21 and 33.24 ppb respectively, which are over MRL (maximum residual limit of >20.0 ppb). On the other hand, DORB samples of 7, 14 and 21 days of storage had showed higher load of aflatoxin B1 of 40.98, 57.74 and 38.11 ppb respectively (Table 3). Gourama and Bullerman (1995) verified a positive correlation between fungal growth and aflatoxin B1 production in rice stored under controlled conditions. Our data revealed similar result.

Effect of SBE as an organic fertilizer on BRRI dhan81 in Boro season. In this study, six treatments (T₁, T₂, T₃, T₄, T₅ and T₆) of BRRI dhan81 were conducted in Boro season. Here, T₁ was used as control; T₂ was BRRI recommended dose as well as T₃, T₄, T₅ and T₆ were different percent of spent bleaching earth with BRRI recommended dose. Table 4 shows the composition of SBE. It contains 50.36% ash, 6.58% carbon along with 36% volatile matter. Therefore, SBE is a good source of organic matter.

Yield and yield contributing characters. Among yield and yield contributing characters, findings of the percentage of spent bleaching earth of those treatments which were very close to BRRI recommended dose are shown in Table 5. Result shows that plant height of T₂ was similar to plant height of T₆, whereas plant height of T₂ was dissimilar to T₃, T₄ and T₅. Tiller number of T₂ was similar to tiller number of T₆ and almost similar to T₅, whereas tiller number of T₂ was dissimilar to T₃ and T₄. Panicle number of T₂ was similar to panicle number of T₆ and almost similar to T₅, whereas tiller number of T₂ was dissimilar to T₃ and T₄. Grain yield of T₂ was dissimilar to grain yield of T₁, T₃, T₄ and T₅ whereas T₂ was similar to T₆. Straw yield of T₂ was dissimilar to T₁, T₃, T₄ and T₅ whereas T₂ was similar to T₆. The 1000 grain weight (TGW) of T₂ was similar to T₄ as well as almost similar to T₁, T₃, T₅ and T₆. In this Table, T₃ was similar to T₁ of all parameters except grain yield.

Milling and physical properties. Among milling and physical properties, findings of the percentage of SBE of those treatments which were very close to BRRI recommended dose shown in Table 6. Result shows that milling outturn of T₂ was similar to milling outturn of T₄ and T₅, whereas milling outturn of T₂ was almost similar to T₆. Head rice recovery of T₂ was almost similar to head rice recovery of T₄, T₅ and T₆. T₃ of milling outturn was almost similar to T₁ as well as T₃ of head rice recovery was similar to T₁ treatment. In this Table, paddy length, paddy breadth, milled rice length, milled rice breadth, L/B ratio, size and shape, appearance and chalkiness have shown similar result.

Chemical and cooking properties. Among chemical and cooking properties, findings of the percentage of spent bleaching earth of those treatments, which were very close to BRRI recommended dose are shown in Table 7. Result shows that all treatments (T₁, T₂, T₃, T₄, T₅ and T₆) of alkali spreading value (ASV), amylose content, elongation ratio (ER) and imbibition ratio (IR) were similar. Protein content of T₂ was similar to protein content of T₃, T₅ and T₆, whereas protein content of T₂ was dissimilar to T₄. Moisture content of T₂ was almost similar to moisture content of T₄, T₅ and T₆, whereas moisture content of T₂ was dissimilar to T₃. Cooking time of T₂ was similar to cooking time of T₁, T₅ and T₆ as well as almost similar to T₃ and

T₄. In this Table, T₃ was similar to T₁ of ASV, amylose content, ER and IR as well as T₃ was almost similar to T₁ of protein content, moisture content and cooking time.

Pearson correlations coefficients for relationships had among the different parameters of BRRI dhan81 based on the composition of spent bleaching earth and BRRI recommended dose (Table 8). Yield of SBE (spent bleaching earth) and yield of BRD (BRRI recommended dose) were significant and positively correlated with panicle number of SBE and panicle number of BRD ($r=0.668$ and $r=0.997$, $p<0.05$). The TGW of SBE was highly significant and positively correlated with panicle number of SBE ($r=0.716$, $p<0.01$) as well as it was positively correlated with yield of SBE whereas TGW of BRD was negatively correlated with panicle number of BRD and yield of BRD. Milling outturn of SBE was positively correlated with panicle number and yield of SBE as well as it was significant and positively correlated with TGW of SBE ($r=0.704$, $p<0.05$) whereas milling outturn of BRD was positively correlated with panicle number, yield and TGW of BRD. Head rice recovery of SBE was significant and and panicle number of BRD ($r=0.668$ and $r=0.997$, $p<0.05$). TGW of SBE was highly significant and positively correlated with panicle number of SBE ($r=0.716$, $p<0.01$) as well as it was positively correlated with yield of SBE whereas TGW of BRD was negatively correlated with panicle number of BRD and yield of BRD. Milling outturn of SBE was positively correlated with panicle number and yield of SBE as well as it was significant and positively correlated with TGW of SBE ($r=0.704$, $p<0.05$) whereas milling outturn of BRD was positively correlated with panicle number, yield and TGW of BRD. Head rice recovery of SBE was significant and positively correlated with panicle number, yield and TGW of SBE ($r=0.608$, $r=0.664$ and $r=0.643$, $p<0.05$) as well as it was highly significant and positively correlated with milling outturn of SBE ($r=0.834$, $p<0.01$). Head rice recovery of BRD was positively correlated with panicle number, yield and milling outturn of BRD but it was negatively correlated with TGW of BRD. Amylose content of SBE was positively correlated with panicle number, TGW and head rice recovery of SBE but negatively correlated with yield and milling outturn of SBE. Amylose content of BRD was significant and positively correlated with TGW ($r=1.000$, $p<0.05$) as well as it was only positively correlated with milling outturn of BRD but negatively correlated with panicle number, yield and head rice recovery of BRD. Protein content of SBE was highly significant and positively correlated with milling outturn of SBE ($r=0.775$, $p<0.01$), significant and positively correlated with head rice recovery of SBE ($r=0.632$, $p<0.05$) as well as it was positively correlated with panicle number, yield, TGW and amylose content of SBE. Protein content of BRD was highly significant and positively correlated with milling outturn of BRD ($r=0.1.000$, $p<0.01$) as well as it was positively correlated with panicle number, yield, TGW. and amylose content of BRD. But protein content of BRD had no relation with head rice recovery of BRD. Elongation ratio (ER) of SBE was positively correlated with head rice recovery, amylose content and protein content of SBE but negatively correlated with panicle number, yield, TGW and milling outturn of SBE. Elongation ratio of BRD ($r=1.000$ and $r=1.000$, $p<0.1$). It was positively correlated with milling outturn and

protein content of BRD but negatively correlated with panicle number, yield, head rice recovery and elongation ratio of BRD.

Table 2. Detection of heavy metals and toxins in RB, DORB and RBO samples.

Parameter	As (ppb)	Cd (ppm)	Pb (ppm)	Cr (ppm)	Ni (ppm)	TVC (cfu/g)	Yeasts & molds (cfu/g)	Microbiological effect	Toxicity	Aflatoxins (ppb)
RB-Fresh	<5.0	<0.05	<0.5	0.03	<0.5	10000	50	AQ	No	9.79
DORB-Fresh	<5.0	0.071	<0.5	<0.2	<0.5	11600	300	NAQ	No	9.43
RBO crude	<5.0	<0.05	<0.5	0.03	<0.5	Nil	Nil	AQ	No	Nil
RBO refined	<5.0	<0.05	<0.5	<0.2	<0.5	Nil	Nil	AQ	No	Nil

Note: RB= Rice bran, DORB= Deoiled rice bran, cfu = colony forming unit

Table 3. Detection of heavy metals and toxins in RB and DORB samples at different duration (0-28 days).

Parameter	TVC (cfu/g)	Yeasts & molds (cfu/g)	Microbiological effect	Toxicity	Aflatoxins MRL 20 ppb
RB-Fresh	10000	50	AQ	No	9.79
RB-7 days	27500	12500	NAQ	No	12.15
RB-14 days	18500	1600	AQ	No	40.21
RB-21days	16800	923	AQ	No	33.24
RB-28 days	920	85	AQ	No	ND
DORB-Fresh	11600	300	NAQ	No	9.43
DORB-7days	59000	14700	NAQ	No	40.98
DORB-14days	17200	2000	AQ	No	57.74
DORB-21days	9350	892	AQ	No	38.11
DORB-28days	11.40	36	AQ	No	ND

Note: MRL= Maximum residual limit, AQ= Accepted quality, NAQ= Not accepted quality

Table 4. Properties of spent bleaching earth (SBE).

Item	Unit	SBE
As	ppb	0.89
Al	ppm	11650
Cd	ppm	BDL
Pb	ppm	BDL
Cr	ppm	10.28
Si	ppm	BDL
Ni	ppm	BDL
Ash	%	50.36
Moisture	%	4.7
Volatile Matter	%	36
Carbon	%	6.58
Functional group	C-H, C=O, -C-H, C-O, C-Cl	
Calorie	kcal/kg	3411

Note: ppm= Parts per million, ppb= Parts per billion, BDL= Below detectable limit

Table 5. Effect of SBE on yield and yield contributing characters of BRRI dhan81, Boro 2018-19, BRRI, Gazipur.

Treatment	Plant height (cm)	Tiller no.	Panicle no.	Grain yield, dry (t ha ⁻¹)	Straw yield, dry (t ha ⁻¹)	TGW (g)
T ₁	29.33 ^D	144 ^C	135 ^C	2.41 ^E	2.26 ^D	22.6 ^B
T ₂	37.68 ^A	256 ^A	246 ^A	6.66 ^A	5.39 ^A	23.0 ^{AB}
T ₃	28.57 ^D	165 ^C	153 ^C	3.88 ^D	2.47 ^D	22.6 ^B
T ₄	31.97 ^C	198 ^{BC}	186 ^B	4.65 ^C	3.95 ^C	23.1 ^{AB}
T ₅	34.75 ^B	240 ^{AB}	225 ^{AB}	5.49 ^B	4.72 ^B	23.3 ^A
T ₆	36.52 ^A	250 ^A	241 ^A	6.27 ^A	5.27 ^A	23.2 ^A
Mean±SE	33.14±0.76	208.94±16.40	197.61±14.89	4.89±0.21	4.01±0.15	22.95±0.21
CV (%)	3	10	9	5	5	1

Table 6. Effect of SBE on milling and physical properties of BRRI dhan81, Boro 2018-19, BRRI, Gazipur.

Treat- ment	Milling outturn (%)	Head rice recovery (%)	Paddy length (mm)	Paddy breadth (mm)	Milled rice length (mm)	Milled rice breadth (mm)	L/B ratio	Size & shape	Appearance	Chalkiness
T ₁	70.7 ^C	50.3 ^C	10.0 ^A	2.1 ^A	6.8 ^A	1.8 ^A	3.8 ^A	LS	Vgood	Tr/Wc ₉
T ₂	72.7 ^{AB}	55.3 ^A	10.2 ^A	2.1 ^A	6.8 ^A	1.8 ^A	3.8 ^A	LS	Vgood	Tr/Wc ₉
T ₃	71.7 ^{BC}	52.0 ^C	10.0 ^A	2.2 ^A	6.8 ^A	1.8 ^A	3.8 ^A	LS	Vgood	Tr/Wc ₉
T ₄	72.0 ^{AB}	53.7 ^{BC}	10.1 ^A	2.1 ^A	6.7 ^A	1.8 ^A	3.7 ^A	LS	Vgood	Tr/Wc ₉
T ₅	72.3 ^{AB}	57.3 ^{AB}	10.3 ^A	2.1 ^A	6.8 ^A	1.8 ^A	3.8 ^A	LS	Vgood	Tr/Wc ₉
T ₆	73.0 ^A	57.3 ^{AB}	10.3 ^A	2.1 ^A	6.7 ^A	1.8 ^A	3.7 ^A	LS	Vgood	Tr/Wc ₉
Mean ± SE	72.06±0.51	54.94±1.95	10.1±0.1	2.12±0.06	6.77±0.09	1.81±0.03	3.74±0.07	-		-
CV (%)	1	4	1	3	2	2	2	-		-

Note: LS= Long slender, Tr= Translucent, Wc= White centre

Table 7. Effect of SBE on chemical and cooking properties of BRRI dhan81, Boro 2018-19, BRRI, Gazipur.

Treatment	ASV	Amylose (%)	Protein (%)	Moisture (%)	Cooking time (min)	ER	IR
T ₁	5.0 ^A	25.4 ^A	8.8 ^B	12.8 ^C	16.2 ^{AB}	1.5 ^A	4.4 ^A
T ₂	5.3 ^A	25.8 ^A	9.7 ^A	13.3 ^A	16.4 ^{AB}	1.4 ^A	4.3 ^A
T ₃	5.0 ^A	25.9 ^A	9.0 ^{AB}	13.0 ^{BC}	17.1 ^A	1.4 ^A	4.3 ^A
T ₄	5.2 ^A	26.3 ^A	8.7 ^B	13.2 ^{AB}	15.5 ^B	1.5 ^A	4.4 ^A
T ₅	5.3 ^A	26.2 ^A	9.1 ^{AB}	13.1 ^{AB}	16.8 ^{AB}	1.5 ^A	4.4 ^A
T ₆	5.1 ^A	26.1 ^A	9.3 ^{AB}	13.2 ^{AB}	16.2 ^{AB}	1.4 ^A	4.3 ^A
Mean ± SE	5.15±0.27	25.94±0.69	9.10±0.37	13.11±0.12	16.37±0.61	1.44±0.064	4.35±0.09
CV (%)	7	3	5	1	5	5	3

Note: ASV= Alkali spreading value, ER= Elongation ratio, IR= Imbibition ratio

Table 8. Pearson correlations coefficients among the parameters of BRRI dhan81 based on the composition of SBE and BRD.

Correlations							
Treatment	Parameter	Panicle no.	Yield t/ha	TGW (g)	Milling outturn (%)	Head rice recovery (%)	Protein (%)
SBE		.668*					
BRD	Yield (t/ha)	.997*					
SBE		.716**	.390				
BRD	TGW (g)	-.564	-.500				
SBE		.571	.499	.704*			
BRD	Milling outturn (%)	.705	.756	.189			
SBE		.608*	.664*	.643*	.834**		
BRD	Head rice recovery (%)	.710	.655	-.982	.000		
SBE		.068	-.328	.323	-.066	.040	
BRD	Amylose (%)	-.540	-.475	1.000*	.217	-.976	
SBE		.218	.027	.530	.775**	.632*	.222
BRD	Protein (%)	.705	.756	.189	1.000**	.000	.217
SBE		-.342	-.188	-.164	-.190	.055	.004
BRD	Elongation ratio (ER)	-.705	-.756	-.189	-1.000**	.000	-.217
SBE		-.028	.232	.049	.091	.099	-.096
BRD	Imbibition ratio (IR)	-.564	-.500	1.000**	.189	-.982	.189

**. Correlation is significant at the 0.01 level (2-tailed).

*. Correlation is significant at the 0.05 level (2-tailed).

SBE= Spent bleaching earth
BRD= BRRI recommended dose
TGW=1000 grain weight (g)

ACHIEVMENTS

- A total of 33 commercial mills including nine auto rice mills, 12 RBO and 12 feed industries were visited to get information from industries.
- Even though aflatoxin B1 is found present in both RB and DORB, both crude and refined RBO do not possess trace amount of aflatoxin B1. In addition RB and DORB do not have heavy metal exposures such as As, Pb, Cd, Cr and Ni.
- Since acute toxicity experiment on animal health, toxins and heavy metal toxicity in RBO samples found negative, so refined RBO is safe and will bring benefit to our health.

CONSTRAINTS

- Absence of central collection and storage procedure of rice bran at auto rice mills.
- Importing of DORB from neighboring country without proper utilization of native DORB.
- Multilocation long term field trials on SBE were not performed due to shortage of time.
- Poor quality feed might be produced by mixing husk with RB and DORB due to lack of proper monitoring.

RECOMMENDATION

- Quality of RBO production (both crude and refined) in Bangladesh is safe in terms of heavy metals and mycotoxins presence.
- To use SBE as organic matter along with chemical fertilizer, field trial at different regional stations of BRRI should be carried out in different cropping seasons.

CONCLUSION

Our data reveal that RB and DORB have immense potential use in RBO and feed mills in Bangladesh. Since long time storage of RB products produce toxins, so feed industries should be more attentive in dealing with RB and DORB as plant energy source. Since both crude and refined RBO do not possess toxins and heavy metals, so these products are safer for Bangladeshi population. SBE is found effectively potential as organic fertilizer at 25% replacement of BRRI recommended fertilizer dose and it can further be extended up to 50%.

ACKNOWLEDGEMENT

We would like to offer thanks to the authority of BRRI, BARC and Ministry of Agriculture for their special research grant of “Agriculture Research Program 3257103” for financial year 2018-19 under the Ministry of Agriculture (Part- 1430101-120006504) for financial and technical support as well as monitoring for conducting this research smoothly.

REFERENCES

- Aguilar-Garcia, C, Gavino, G, Baragano-Mosqueda, M, Hevia, P, and Gavino, V C. 2007. Correlation of tocopherol, tocotrienol, γ -oryzanol and total polyphenol content in rice bran with different antioxidant capacity assays. *Food Chemistry*. 102:1228-1232.
- Amin, O. E, Abdulaziz S A, Michael F D. 2017. Aflatoxin in Rice Crop: Prevalence and Assessment of Daily Exposure. *Fungal Metabolites* pp 219-237.
- Cheonga, K Y, Lohb, S K and Salimona, J. 2013. Effect of Spent Bleaching Earth Based Bio Organic Fertilizer on Growth, Yield and Quality of Eggplants Under Field Condition. *AIP Conference Proceedings*; 1571: 744; <https://doi.org/10.1063/1.4858743>.
- Dale, N. 1997. Feedstuffs ingredient analysis table. *Feed Stuff*. Watt Pub. Co., IL. USA, pp. 48-52.
- Elangovan, T V P and Kalyanasundaram, I. 1999. Prevalence of Aflatoxin B1 in rice bran and some associated factors. *Indian Phytopath.* 52 (2) : 129-133.
- Fabjola, B, Marco L, Laura B, Alberto B, Laura B, Laura E D and Elza B. 2015. Evaluation of Heavy Metals Contamination from Environment to Food Matrix by TXRF: The Case of Rice and Rice Husk. *Journal of Chemistry*, Article ID 274340, 12 pages.
- Farrell, D J. 1994. Utilization of rice bran in diets for domestic fowl and ducklings. *World's Poultry Science Journal*. 50: 115-131.
- Gourama, H and Bullerman, L B. 1995. Relationship between aflatoxin production and mold growth as measured by ergosterol and plate count. *Lebensm.-Wiss. U.- Technol.*, 28: 185-189.
- Haque, M A and Shozib, H B. 2018. Post-harvest loss minimization of rice bran for quality bran oil production. Publication number-261, BRRI, Gazipur 1701.
- Houston, D F. 1972. 'Rice Chemistry and Technology' (Volume IV). Minnesota: American Association of Cereal Chemists, Inc.
- Hu, X F, Jiang, Y, Shu, Y, Hu, X, Liu, L and Luo, F. 2014. Effects of mining wastewater discharges on heavy metal pollution and soil enzyme activity of the paddy fields, *Journal of Geochemical Exploration*, vol. 147, part B, pp. 139-150.
- Huamain, C, Chunrong, Z, Cong, T and Yongguan, Z. 1999. Heavy metal pollution in soils in China: status and countermeasures, *Ambio*, vol. 28, no. 2, pp. 130-134.
- Islam, K M S, Shuvo, A A S, Achergee, S S and Ahsan Kabir, A K M. 2018. Comparison of Rice Bran and Deoiled Rice Bran as Feed Ingredient for Broiler. *Journal of Agricultural Engineering and Food Technology* p-ISSN: 2350-0085; e-ISSN: 2350-0263; Volume 5, Issue 2; pp. 58-61.

- Jayaraman, P and Kalyanasundaram, I. 2009. Natural occurrence of aflatoxins and toxigenic fungi in rice bran oil and de-oiled bran. *Indian Journal of Science and Technology* Vol.2 No.10, ISSN: 0974- 6846.
- Lai, P, Li, K Y, Lu, S and Chen, H. 2009. Phytochemicals and antioxidant properties of solvent extracts from Japonica rice bran. *Food Chemistry*. 117:538-544.
- Mamun-Ur-Rashid, M, Belton, B, Phillips, M, Rosentrater, K A. 2013. Improving aquaculture feed in Bangladesh: From feed ingredients to farmer profit to safe consumption. *WorldFish*, Penang, Malaysia. Working Paper: 2013-34.
- Rukmini, C. 1985. Chemistry, nutritional and toxicological studies of rice bran oil. *Food Chem*. 30, 257-268.
- Sekara, M, Poniedzialek, J, Ciura, and Jedrszczyk, E. 2005. Cadmium and lead accumulation and distribution in the organs of nine crops: implications for phytoremediation, *Polish Journal of Environmental Studies*, vol. 14, no. 4, pp. 509-516.
- Sharif, M K, Butt, M S, Anjum, F M, Khan, S H. 2014. Rice bran: A novel functional ingredient. *Crit Rev Food Sci Nutr*. 54:807-16.
- Uchida, S, Tagami, K and Ishikawa, N. 2009. Concentration, soil-to-plant transfer factor and soil-soil solution distribution coefficient of selenium in the surface environment (9106), in *Proceedings of the Symposium on Waste Management (WM '09)*, pp. 1-5, Phoenix, Ariz, USA.
- Warren, B E, Farrell, D J. 1990. The nutritive-value of full-fat and defatted rice bran. Growth studies with chickens, rats and pigs. *Animal Feed Science and Technology*. 27:229-46.
- Watanabe, M E. 1997. Phytoremediation on the brink of commercialization, *Environmental Science & Technology*, vol. 31, pp. 82A-187A,
- Zulfikar M A, *Aquafeeds in Bangladesh: Status and Nutritional Quality of Commercial Feed Ingredients and Feeds*. Bangladesh Fisheries Research Institute. Mymensingh.http://www.fao.org/fileadmin/user_upload/affris/docs/news/pres2/Annex_I_Status_and_nutritional_quality_of_commercial_feed_ingredients_and_feeds.pdf

PICTORIAL VIEWS OF OUR ACTIVITIES

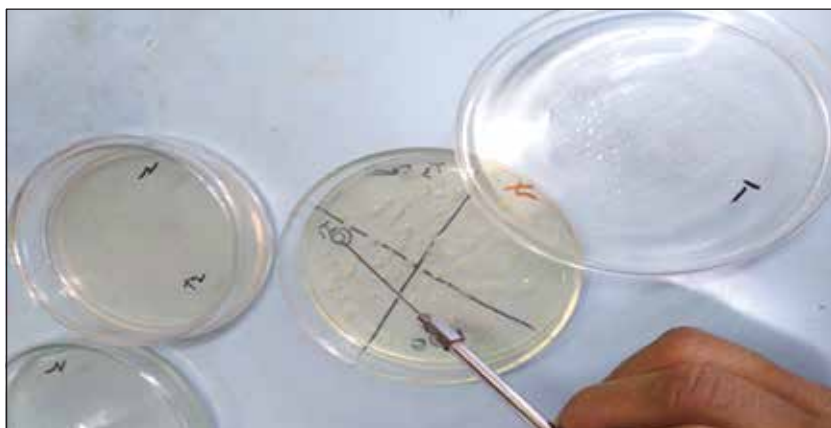
Visit of BARC monitoring team



Field trial on SBE application



Microbial assay



Feed mill visit



Feed and RBO mill visit





Grain Quality and Nutrition Division
Bangladesh Rice Research Institute (BRRI)