

Year wise Growth Rate of Rice Production(ton) in Bangladesh (1971-72 to 2018-19)

Year	Production	G R
1971-72	9774000	-
1972-73	9901000	1.30
1973-74	11720000	18.37
1974-75	11109000	-5.21
1975-76	12560000	13.06
1976-77	11569000	-7.89
1977-78	12764000	10.33
1978-79	12645000	-0.93
1979-80	12539000	-0.84
1980-81	13883000	10.72
1981-82	13631000	-1.82
1982-83	14129000	3.65
1983-84	14415000	2.02
1984-85	14622000	1.44
1985-86	15041000	2.87
1986-87	15407000	2.43
1987-88	15414000	0.05
1988-89	15544000	0.84
1989-90	17710000	13.93
1990-91	17785000	0.42
1991-92	18255000	2.64
1992-93	18341000	0.47
1993-94	18041600	-1.63
1994-95	16833400	-6.70
1995-96	17686600	5.07
1996-97	18881000	6.75
1997-98	18861700	-0.10
1998-99	19904600	5.53
1999-00	23067000	15.89
2000-01	25085500	8.75
2001-02	24300000	-3.13
2002-03	25191300	3.67
2003-04	26189400	3.96
2004-05	25156100	-3.95
2005-06	26530300	5.46
2006-07	27318000	2.97
2007-08	28931000	5.90
2008-09	31317000	8.25
2009-10	31975000	2.10
2010-11	33540320	4.90
2011-12	33914000	1.11
2012-13	33833000	-0.24
2013-14	34356300	1.55
2014-15	34861200	1.47
2015-16	35060500	0.57
2016-17	34201500	-2.45
2017-18	36279300	6.08
2018-19	37363600	2.99

Source: BBS & DAE.

Note: Growth Rate

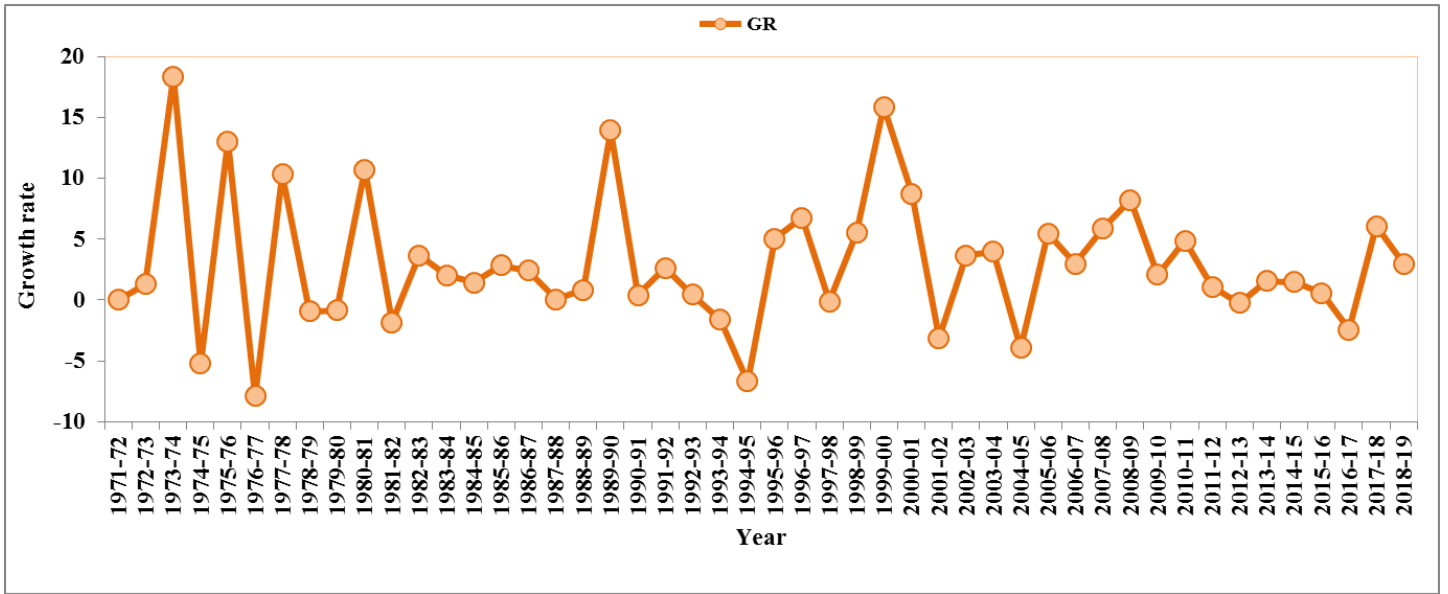


Figure: Year wise growth rate of rice production in Bangladesh from 1972-73 to 2018-19